

# Navigate

## CUSTOMER SERVICE DESK:

Mobile or Fixed  
Panel Options: All Steel or Wood / Steel  
Standard Laminate Top, Acrylic Edge  
Granite, Corian, etc: Quote Required  
76-3/4" W front; 42" W back; 24" D;  
30" H worksurface; 36" H overall



## SECURITY DESK:

Mobile or Fixed  
Panel Option: All Steel  
Standard Laminate Top, Acrylic Edge  
Granite, Corian, etc: Quote Required  
83" W front; 44" W back; 24" D;  
30" H worksurface; 36" H overall



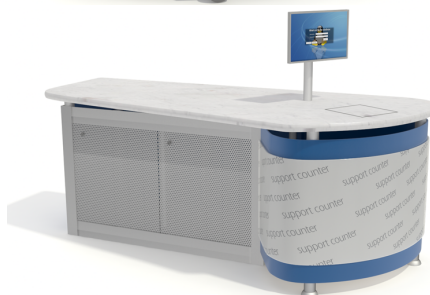
## SUPERVISOR DESK:

Mobile or Fixed  
Panel Options: All Steel or Wood / Steel  
Standard Laminate Top, Acrylic Edge  
Granite, Corian, etc: Quote Required  
76-3/4" W front; 42" W back; 24" D;  
30" H worksurface; 36" H overall



## SUPPORT COUNTER:

Fixed Only  
Panel Option: All Steel  
Standard Laminate Top, Acrylic Edge  
Granite, Corian, etc: Quote Required  
93" W front; 40" D;  
36" H overall



## MOBILE CUPBOARD UNIT:

Mobile Only  
Panel Options: All Steel  
Standard Laminate Top, Acrylic Edge  
Granite, Corian, etc: Quote Required  
30" H; 20" W; 20" D



## OPAC Station - Standard or ADA Options:

Mobile or Fixed  
Panel Options: All Steel  
Standard Laminate Top, Acrylic Edge  
Granite, Corian, etc: Quote Required  
33" W front; 17" W back; 25-1/8" D;  
36" H overall for Standard; 32" H overall for ADA



## SELF-CHECK - Standard or ADA Options:

Mobile or Fixed  
Panel Options: All Steel  
Standard Laminate Top, Acrylic Edge  
Granite, Corian, etc: Quote Required  
44" W front; 22" W back; 33-1/2" D;  
36" H overall for Standard; 32" H overall for ADA

